

## VETERINARY PRODUCT LINE

- NEOMEDICA offers a broad range of hematology, biochemistry, urinalysis reagents and analyzers dedicated to delivering the highest quality test results to the animal healthcare professional.
- We realize that ease of use, reliability, and low operating costs are of great importance to veterinarians. We are focused on delivering these qualities with our product lines.





## Phoenix NCC-30Vet

Automated 3-Differential veterinary hematology analyzer (40 samples / hour)

- **Phoenix NCC-30Vet** is a 3-diff hematology analyzer which provides maximal CBC accuracy in analyzing animal blood.
- Supports both whole blood and capillary blood samples in open vial.
- Electrical impedance and Photoelectric colorimetry.
- Linux operation system.



### TECHNICAL SPECIFICATIONS

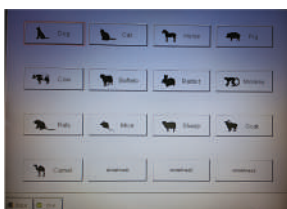
- Principles of operation: WBC/RBC/PLT: Electrical impedance; HGB: Photoelectric Colorimetry
- Parameter: 3-part differentiation of WBC  
 WBC,LYM#, MID#,GRAN#,LYM%,MID%, GRAN%, RBC, HGB,HCT,MCV,MCH,MCHC,RDW-CV,RDW-SD,PLT,MPV, PDW, PCT,P-LCR, P-LCC.
- Sample volume: Whole blood 10uL, Pre-diluted 20uL
- 24 parameters including 3 histograms (WBC,RBC,PLT)
- General Throughput: 40 samples/hour
- 24 hour continuous running, auto stand-by
- Storage: more than 100.000 sample results including histograms
- Dimension of aperture: WBC/RBC/PLT: 80µm
- 57 mm type internal thermal printer
- Calibration and QC program for each animal
- Supported LIS and HIS with HL7 protocol
- Parallel Port and USB for external printer
- Shortcut keys with standard mouse and keyboard
- Interface: Support RS232, standard network port and USB, Bar code reader (optional)
- 3 cyanide-free reagents
- Open tube sampling system
- Automatic cleaning, flush, cauterize
- Optional outprint without measurement delay
- Alarm and warnings: Error messages
- Non-stop work load
- Large color LCD display 10.4" & Linux operation system
- QC Mode: L-J,X,X-R,X-B  
 Manual & auto calibration
- Power supply: AC100-240V~50/60Hz
- Dimensions: 650(L)x470(W)x600mm(H)  
 Gross Weight: 23 kg

### ANIMAL SPECIES

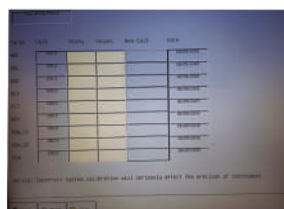
**13** pre-defined animal types:  
 Dog, Horse, Cat, Monkey, Cow, Pig, Buffalo, Rabbit, Camel, Rat, Mouse, Sheep, Goat and

**3** types defined by user

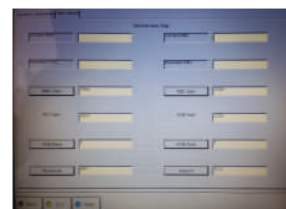
13+3 type of animals



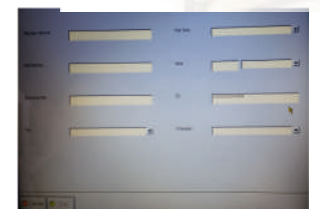
Calibration screen



Diff. gain for each animal



Animal information



### Linearity Range

WBC: 0.0x10<sup>9</sup>/L - 99.9x10<sup>9</sup>/L

RBC: 0.1x10<sup>12</sup>/L - 7.00x10<sup>12</sup>/L

HGB: 0 - 300 g/L

PLT: 0x10<sup>9</sup>/L - 999x10<sup>9</sup>/L





**NeoMedica**  
bioscience technology

## 5-DIFF VETERINARY HEMATOLOGY ANALYZER

# Phoenix NCC-60Vet

Automated 5-Differential veterinary hematology analyzer (60 samples / hour)

### with RETIC Analysis

- **Phoenix NCC-60Vet** is a 5-diff hematology analyzer which provides maximal CBC accuracy in analyzing animal blood.
- Supports both whole blood and capillary blood samples in open vial.
- Phoenix NCC-60Vet uses helium-neon laser for the flow cytometry system.
- The complete analysis of cell size, granularity and complexity is gained by calculating different angles via laser scatters.



### 4 cyanide-free reagents

- Windows based software
- PC, Monitor & printer are included
- Display: PC display (14 inch color TFT)
- Open tube sampling system
- Automatic cleaning of sample probe (inside and outside)
- Alarm and warnings: Error messages
- Non-stop work load
- 4 cyanide-free reagents
- Power supply: AC100-240V~50/60Hz
- Dimensions: 598,5(L)x585,5(W)x495mm(H)  
Gross Weight: 70 kg



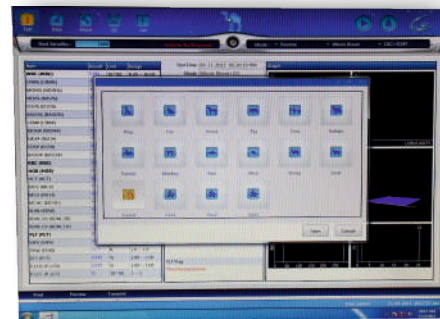
### TECHNICAL SPECIFICATIONS

- Parameter: 5-part differentiation of WBC  
WBC,LYM%,MON%,NEU%,EOS%,BAS%,LYM#,MON#,  
NEU#,EOS#,BAS#,RBC,HGB,HCT,MCV,MCH,MCHC,  
RDW-CV,RDW-SD,PLT,MPV,PDW,PCT,P\_LCR, P\_LCC,  
RETIC%,RETIC\_ABS,IRF.
- Sample volume: Whole blood 20uL, Pre-diluted 20uL
- 28 hematology parameters
- 2 histograms for RBC and PLT, 2 5-part differential scatter grams, 2 3D stereograms
- Eosinophils and Neutrophils scatter gram
- General Throughput: 60 samples/hour
- 24 hour continuous running, auto stand-by
- Storage: up to 200.000 sample results including scattergrams
- Automatic outprint without delay in analysis
- Calibration and QC program for each animal
- Comprehensive QC program, LIS

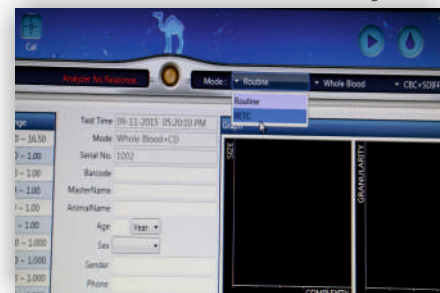
### ANIMAL SPECIES

- 13** pre-defined animal types:  
Dog, Horse, Cat, Monkey, Cow, Pig, Buffalo, Rabbit, Camel, Rat, Mouse, Sheep, Goat and
- 3** types defined by user
- 16** pre-defined animal settings

### Species testing Screen



### RETIC Analysis



VETERINARY HEMATOLOGY ANALYZERS

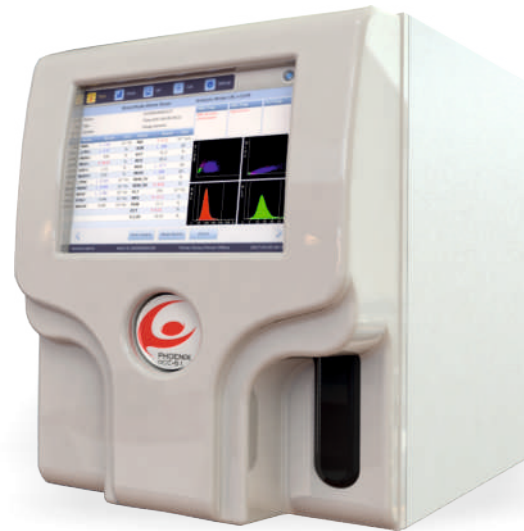


**NeoMedica**  
bioscience technology

## 5-DIFF VETERINARY HEMATOLOGY ANALYZER

# Phoenix NCC-61Vet

Automated 5-Differential veterinary hematology analyzer (60 samples / hour)



with **RETIC Analysis**

Neomedica's ultimate veterinary solution:

Fast and precise 5-diff analysis in the body of a 3-diff device. A compact system that will set new standards in analyzing animal parameters

- **Phoenix NCC-61 VET** is the latest project from Neomedica in the field of veterinary hematology and it has been already launched with huge success.
- Sophisticated flow cytometry technology, intelligent detection and maintenance mechanisms that facilitate handling and troubleshooting figure as key elements in the satisfaction of the customers, whose numbers rise by the day.
- Due to its compact size and weight, small and medium-sized labs in need of fast yet precise 5-differential results comprise the ideal niche for this device. Cyanide-free reagents with long shelf-life and improved packaging enable easy handling and the extremely low consumption makes this analyzer a very favourable and attractive option.

### ANIMAL SPECIES

- 13** pre-defined animal types:  
Dog, Horse, Cat, Monkey, Cow, Pig, Buffalo, Rabbit, Camel, Rat, Mouse, Sheep, Goat and
- 3** types defined by user
- 16** pre-defined animal settings
- 4** cyanide-free reagents  
Diluent, Sheath, Detergent, Lyser

### MAIN ADVANTAGES

- **COMPACT**
- **FLOW CYTOMETRY LASER TECHNOLOGY**
- **RF CARD ensures reliable results**
- **4 Cyanide-free reagents**
- **Multi-dimensional cell classification by laser light**
- **Resistant RBC mode**
- **WIC and WOC for WBC counting**
- **Up to 60 samples per hour throughput**
- **WBC 5 part diff with sheath reagent only**

**TECHNICAL SPECIFICATIONS**

- Tested parameters: 34 parameters  
WBC,LYM%,MON%,NEU%,EOS%,BASO%,LYM#,  
MON#,NEU#,EOS#,BAS#,RBC,HGB,HCT,MCV,MCH,  
MCHC,RDW\_CV,RDW\_SD,PLT,MPV,PDW,PCT,P\_LCR,  
P\_LCC,
- 6 Research parameters: ALY%, ALY#, LIC%, LIC#,  
NRBC%, NRBC#  
2 Histograms for RBC and PLT  
2 Scatter grams: 5-part differential scatter gram  
Eosinophils and Neutrophils scatter gram  
2 3D stereograms
- **3 reticulocyte** parameters:  
RETIC%,RETIC\_ABS, IRF
- Principles of operation:  
WBC/DIFF: Flow Cytometry, Semi-conductor,  
Laser light multi-dimensional cell classification  
WBC Analysis: Optical and impedance measurements  
RBC/PLT Analysis: Impedance method  
HGB test: Cyanide-free reagent colorimetry
- Sample: Whole blood 20µL, Pre-diluent 20µL
- Reagents: 4 cyanide free reagents onboard  
Diluent, Sheath, Detergent, Lyser
- Aperture diameter: WBC 100µm,  
RBC/PLT 68µm
- Throughput: up to 60 samples / hour
- Data storage: up to 200.000 results with  
grams
- Controls: LJ, X, XR, XB control mode etc.
- Double WBC counting mode (Impedance  
& Optical)
- Display: 10.4 inch with touch screen
- Error messages and pathological flagging
- Supported languages: EN,RU,ES,FR,PT
- Electric Specifications  
Power Supply: AC 100V~240V, 50/60Hz,  
Fuse 250V/3.15AH
- External printer supported
- Weight: 35kg

**REAGENTS**

- Cyanide free reagents with long shelf-life and improved packaging allow easy handling and extremely low consumption.

Coefficient of Variation	Linearity Range
WBC ≤ 2.5%	WBC: 0.0- 99.9x10 <sup>3</sup> /uL
RBC ≤ 2.0%	RBC: 0.00- 9.99x10 <sup>6</sup> /uL
HGB ≤ 1.5%	HGB: 0 - 30 g/dL
MCV ≤ 0.4%	40-150fL
PLT ≤ 5.0%	PLT: 0-999x10 <sup>3</sup> /uL

- 4 determination methods:
- The **laser light method** for determining the quantity and Five-Part-Diff of WBC
- **Electrical impedance method** for determining the quantity of RBC and PLT
- The **colorimetric method** for determining the content of HGB
- MCV,HCT,RDW,MPV,PDW,MCH,MCHC,PCT are obtained directly by calculating the stored data.

**RF ID Cards**



**Reliable and Efficient.  
Compact, Economical and Perfect.**



**VETERINARY HEMATOLOGY ANALYZERS**





**NeoMedica**  
bioscience technology

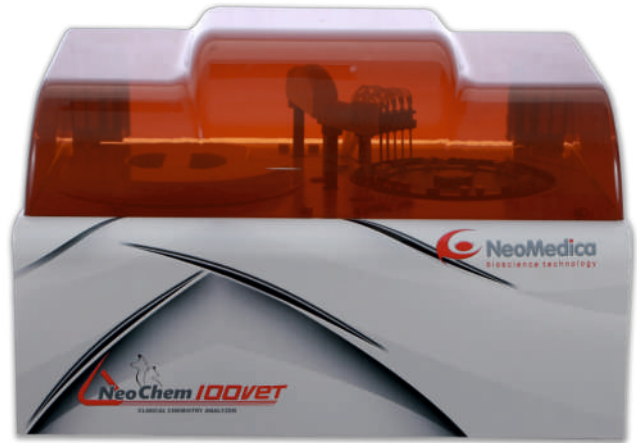
CLINICAL CHEMISTRY ANALYZER FOR VETERINARY USE

# NeoChem 100Vet

Automated Clinical Chemistry analyzer for veterinary use  
(200 samples / hour)

**Highest performance with quality and efficiency For Animals**

- Throughput: Random access, 200 tests/h
- 7-step washing system with hot water
- On-board reagent cooling system
- Fiber optic - optical system
- Collision protection
- Supported LIS Interface



## MAIN ADVANTAGES

- Reagent cooling system
- Automatic cuvettes detection & selection
- Automatic 7-step washing system
- Supported LIS Interface
- Onboard mixer
- Low Water consumption

**MINIMAL MAINTENANCE**  
is reducing your operational costs!

## Highest performance mixer design

- Eliminated cross-contamination
- Optimal homogenization in minimum time

## Accurate sampling

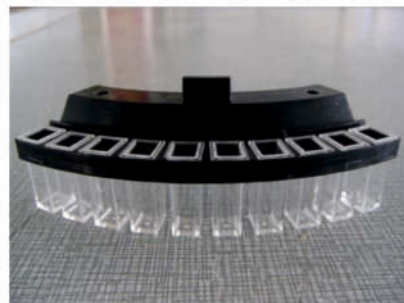
- Liquid level detection
- Collision protection
- Internal and external probe washing
- High quality stepping motor, with minimum 0,1 ul increment

## Ergonomic software

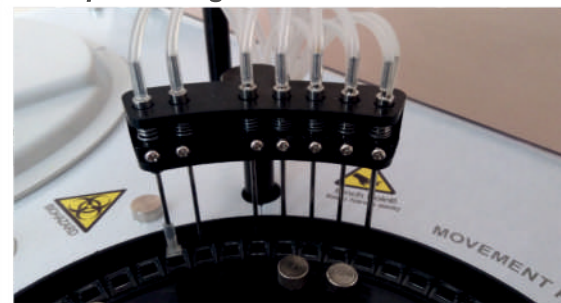
- Species for animals
- Dynamic and real time display for running status



*Low cost reusable cuvettes*



*7-step washing station*



VETERINARY CHEMISTRY ANALYZERS

**TECHNICAL SPECIFICATIONS**

- Test Speed: 200 test / hour
- Assay method: End-point, Fixed-time (two point) Kinetic, Colorimetry, Turbidimetry, Two wavelength, Double reagent, multi-standard etc.
- Reagent Tray: 40 barcoded bottles
- Sample tray: 40 sample positions, samples can be placed randomly, including standard, QC, emergency sample
- Original tube or serum cup can be used
- Reagent tray: 40 reagent positions, 1 diluent position, 20ml reagent bottle, with 24-hour peltier refrigerated reagent tray
- Sample volume: 2-50µl, 0.1µl step
- Reagent volume: R1 150 ~ 300µl, R2 10 ~ 150µl, 1µl step
- Reaction volume: 150 ~ 300µl
- Reaction tray: 60 reusable plastic cuvettes
- Reaction temperature: 37±0.1 °C,
- Hot water ensures constant temperature in the reaction rotor
- Reaction cuvette: 5mm×6mm×25mm, optical path 5mm, metacryll cuvette
- Supported LIS
- 9 wavelengths: 340,405,450,510, 546,578,620, 660, 690 + 2 free
- Optical system: Static optical fiber system multi-wavelength spectrophotometer
- Light source: 12V, 20W long-life halogen lamp or LED optional
- Detecting cycle: 18 seconds
- Integrated bar-code reader
- Data Processing: Editing and storage for more than 300 testing parameters. Patients' information can be stored infinitely.
- Alarms for water & waste, sensors
- Absorbance linearity:0.0000 ~ 4.0000 Abs
- Wavelength accuracy: ±2nm
- Repeatability: CV ≤ 2,0%
- Stability: Within one hour, absorbance change is less than 0.01
- Interface: Instrument / computer: RS-232C, network port, touch screen possible
- QC: Multi QC function, QC diagrams can be stored, displayed and printed; Different QC material can be pre-set up; every test can take 3 different QC material
- Dimensions:415mm(W)x565mm(L)x385mm(H)  
Net Weight: 28 kg



## CLINICAL CHEMISTRY REAGENTS FOR VETERINARY USE



- NEOMEDICA DOO offers you a **complete clinical chemistry reagent panel**
- Cost Saving - minimal dead volume and **optimized R1/R2 reagent ratio**
- **Wide range of biochemistry analysis** with several different methods
- **Reliable results** - superior liquid stability, large linearity range, easy to use
- **Original quality controls and calibrators** ensure precise results of analysis
- **Distinctive and modern packing design** - resistant to moisture and wear, adjusted to the customers' needs
- **Application for open biochemistry systems**

### CLINICAL CHEMISTRY REAGENTS

*Wide product range of clinical chemistry reagents for veterinary use*

<b>ACID AND PROSTATIC PHOSPHATASE</b>	Fast Red
<b>ALBUMIN</b>	BCG (Ready to use)
<b>ALKALINE PHOSPHATASE</b>	AMP (IFCC) liq.
<b>ALPHA AMILASE SL</b>	CNPG3 mono
<b>ALT/GPT-SL</b>	IFCC
<b>AST/GOT-SL</b>	IFCC
<b>AMMONIUM UV</b>	GLDH
<b>BILIRUBIN DIRECT</b>	DPD. Colorimetric
<b>BILIRUBIN TOTAL (B)</b>	DPD. Colorimetric
<b>BILIRUBIN (TOTAL AND DIRECT)</b>	DPD. Colorimetric
<b>CALCIUM ARS</b>	Arsenazo mono
<b>CALCIUM</b>	CPC
<b>CHLORIDE</b>	CPC
<b>CHOLESTEROL HDL DIRECT</b>	Enzymatic colorimetric. Liquid
<b>CHOLESTEROL LDL DIRECT</b>	Enzymatic colorimetric. Liquid
<b>CHOLESTEROL HDL PRECIPITATING REAGENT</b>	Precipitant
<b>CHOLESTEROL LDL PRECIPITATING REAGENT</b>	Precipitant
<b>CHOLESTEROL TOTAL SL</b>	CHOD-PAP
<b>CHOLINESTERASE</b>	Butyryl (DGKC)
<b>CK-MB</b>	Immunoinhibition



<b>CK-NAC SL</b>	DGKC-IFCC
<b>COPPER SL</b>	DBP Colorimetric
<b>CREATININE</b>	Jaffe without deproteinization
<b>GAMMA GT</b>	Carboxy substrate
<b>GLUCOSE SL</b>	GOT-POD
<b>HOMOCYSTEINE SL</b>	Enzymatic UV
<b>IRON F</b>	Ferene / Ferrozine
<b>IRON CAB</b>	Chromazurol B
<b>LACTATE</b>	Enzymatic (Colorimetric)
<b>LDH-p SL</b>	Kinetic UV. DGKC. Liquid
<b>MAGNESIUM</b>	Xylidyl Blue
<b>PHOSPHORUS UV</b>	Molybdate
<b>TOTAL PROTEINS</b>	Biuret (redy to use, monoliquid)
<b>PROTEIN (URINE)</b>	Pyrogallol Red
<b>TIBC-UIBC</b>	Precipitation with Mg-carbonate
<b>TRYGLYCERIDES SL</b>	GPO-PAP monoliquid
<b>UREA UV SL</b>	Kinetic Urease - GLDH
<b>URIC ACID SL</b>	Uricase - POD
<b>SODIUM</b>	Mg-Uranylacetate Method
<b>POTASSIUM</b>	TBP-Na Method / Piruvate Kinase
<b>LITHIUM</b>	Enzymatic
<b>ZINC SL</b>	5-Br-PAPS
<b>CRP</b>	Turbidimetry



NEOMEDICA offers Labware, consumables, plastic tubes, maintenance material, washing solutions and all necessary material for laboratory daily work.

Our experts arrange periodical training for our distributors, and our technical and customer support team is online 24/7 for all questions and help.